

Microscopic and Endoscopic Approaches to the Skull Base

Training on anatomical specimen



We welcome you in the European city of Strasbourg for this first Skull base course at the IRCAD institute. This workshop has been designed to provide the neurosurgeons and ENT the opportunity to enhance their skills in a variety of surgical approaches to the skull base. Attendees will have the opportunity to take advantage of a great and optimal surgical lab environment.

A panel of expert faculties will provide extensive lecture focusing on the complex anatomy of the skull base, surgical and endoscopic approaches and treatment strategies for skull base lesion.

The course set-up will include hands-on dissection with two delegates per specimen (Injected fixed specimen).

TARGET AUDIENCE

Practicing neurosurgeons, otolaryngologists, fellows and residents in training.

COURSE DIRECTORS

S. Froelich **F**

Sebastien.froelich@chru-strasbourg.fr

C. Debry **F**

Christian.Debry@chru-strasbourg.fr

LOCAL FACULTY

P. Boyer – J.C. Debattista – P. Kehrli –
D. Maitrot

A. Charpiot – P. Hemar – A. Gentine

GUEST FACULTY

K.A. Aziz **USA** – L. Cavallo **I** –

A. Chays **F** – T. Civit **F** – E. Gay **F** –

B. Georges **F** – P. Herman **F** –

E. Jouanneau **F** – J.T. Keller **USA** –

J. Morcos **USA** – M.L. Pensack **USA** –

P.H. Roche **F** – S. Schmerber **F** –

J.M. Tew **USA** –

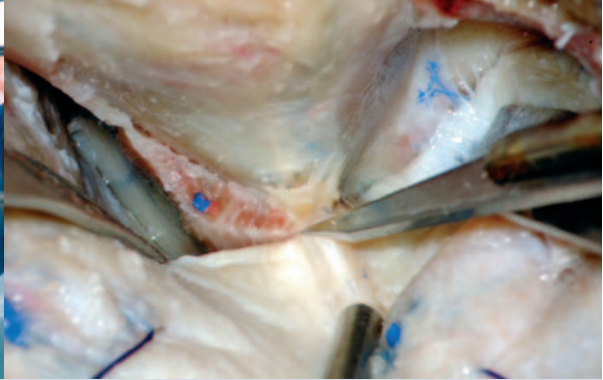
P.V. Theodosopoulos **USA** –

H.R. Van Loveren **USA**



You can register online
for EITS courses at

www.eits.fr



January 20th

MICROSURGICAL APPROACHES TO THE SKULL BASE: SURGICAL ANATOMY AND TECHNIQUES

7.30 am

Shuttle-bus Hotel – IRCAD/EITS

7.55 am

Welcome to participants

8.00 am

LECTURE 1

Cranio-orbito-zygomatic approach
Cavernous sinus approaches

9.30 am

PRACTICAL SESSION IN EXPERIMENTAL LABORATORY 1

12.30 pm

Lunch at the Institute

1.30 pm

LECTURE 2

Anterior petrosal approaches

3.00 pm

PRACTICAL SESSION IN EXPERIMENTAL LABORATORY 2

6.30 pm

Shuttle-bus IRCAD/EITS – Hotel

January 21st

MICROSURGICAL APPROACHES TO THE SKULL BASE: SURGICAL ANATOMY AND TECHNIQUES

7.30 am

Shuttle-bus Hotel – IRCAD/EITS

8.00 am

LECTURE 3

Posterior petrosal approaches

9.30 am

PRACTICAL SESSION IN EXPERIMENTAL LABORATORY 3

12.30 pm

Lunch at the Institute

1.30 pm

LECTURE 4

Transcondylar approaches

3.00 pm

PRACTICAL SESSION IN EXPERIMENTAL LABORATORY 4

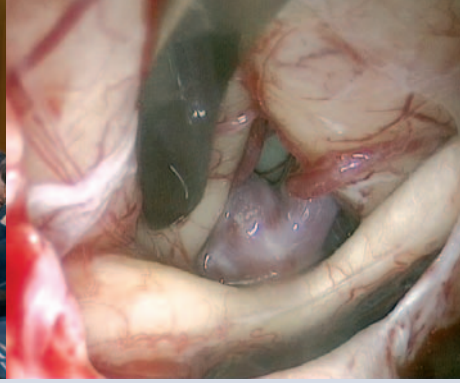
6.30 pm

Shuttle-bus IRCAD/EITS – Hotel

8.30 pm

Dinner in honour of the participants





January 22nd

ENDOSCOPIC APPROACHES TO THE SKULL BASE

7.30 am

Shuttle-bus Hotel – IRCAD/EITS

8.00 am

LECTURE 5

Endoscopic endonasal approaches – Extradural step:

- Endoscopic anatomy of the nasal cavities and sphenoid sinus
- Endoscopic approach to the sella
- Tailored approach to the planum, clivus, orbital apex, pterygopalatine and infratemporal fossa

9.30 am

PRACTICAL SESSION IN EXPERIMENTAL LABORATORY 5

12.30 pm

Lunch at the Institute

1.30 pm

LECTURE 6

Endoscopic endonasal approaches:

- Endoscopic anatomy of the ICA
- Intradural step: What could we do?
- Closure strategy

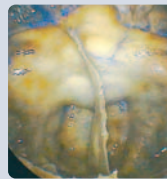
3.00 pm

PRACTICAL SESSION IN EXPERIMENTAL LABORATORY 6

6.30 pm

Shuttle-bus IRCAD/EITS – Hotel

This programme may be subject to modifications.



COURSE OBJECTIVES

- To provide an overview of the complex anatomy of the skull base
- To cover a broad spectrum of the skull base approaches and describe the technical steps of each specific approach
- To discuss indications of skull base approaches and surgical strategies
- To provide hands-on session on cadaveric specimens and improve skills
- To become more familiar with endoscopic endonasal approaches
- To understand the rationale and challenge of endoscopic endonasal approaches to the skull base
- To allow discussion between expert in the field of skull base surgery and trainees